

Monroeville Mall Bridge Construction

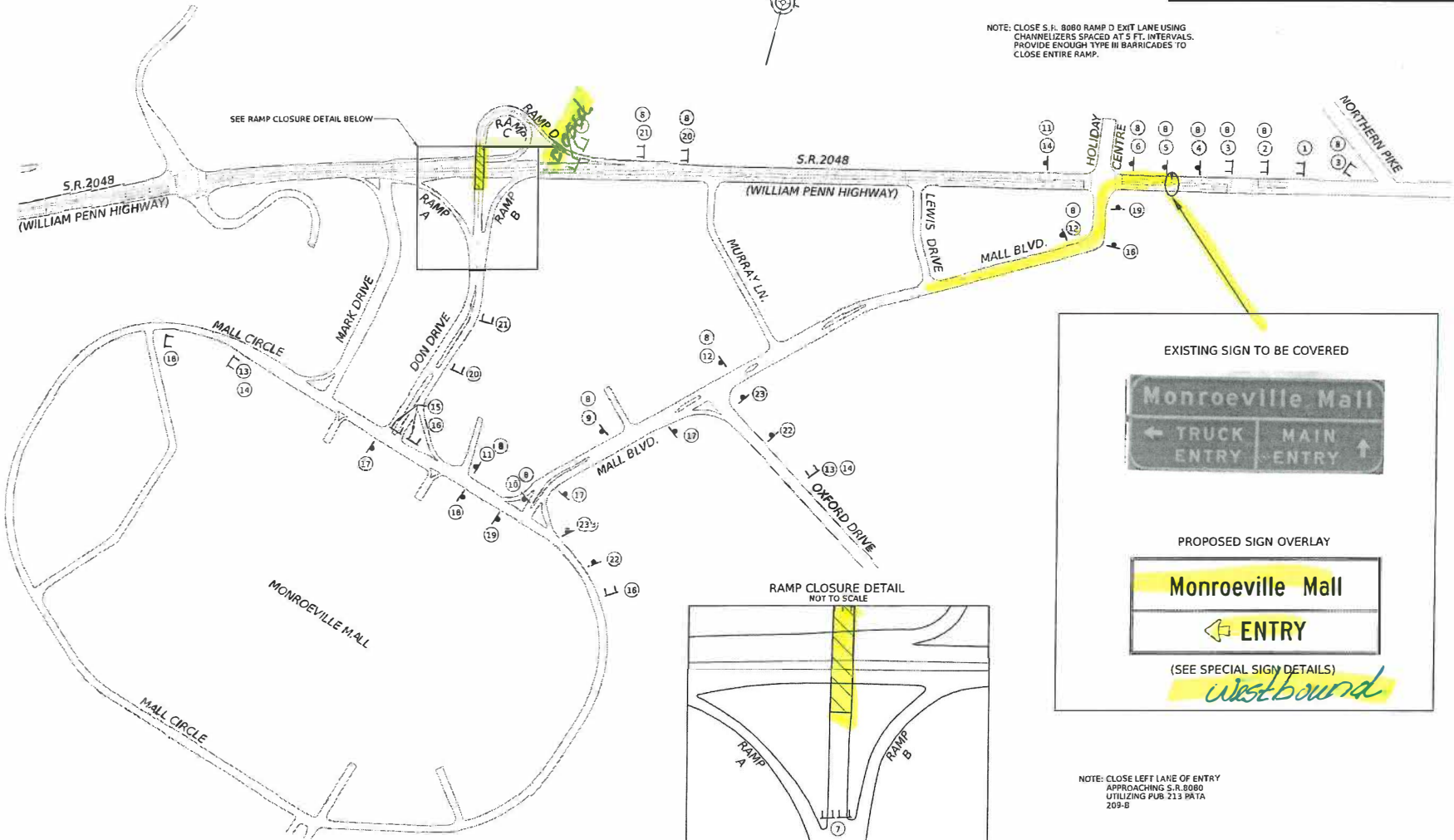
Golden Triangle Construction will be doing work on the bridge connecting William Penn Highway (Rt. 22) westbound to Don Drive (Mall Entrance). The closure is scheduled to begin the morning of Monday, May 6th and anticipated the last until August 15th. Please see map below showing detour.

3-MON-2022-1212
KUTTEL

OPERATOR: maddox
FILE NAME: c:\pwworking\maddox\maddox\2022\02\04\BMS_218.CGP

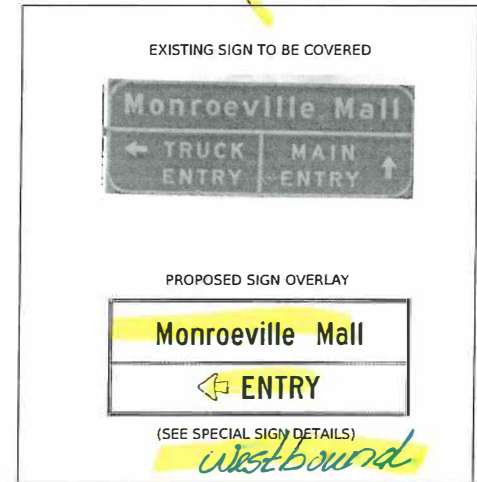
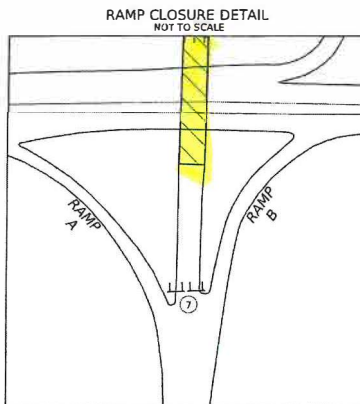
DISTRICT	COUNTY	ROUTE	SECTION	SHEET
11-0	ALLEGHENY	2048	A14	7 OF 47
MUNICIPALITY OF MONROEVILLE				
REV NO	REVISIONS	DATE	BY	APPD

NOTE: CLOSE S.R. 8080 RAMP D EXIT LANE USING CHANNELIZERS SPACED AT 5 FT. INTERVALS. PROVIDE ENOUGH TYPE III BARRICADES TO CLOSE ENTIRE RAMP.



BMS 02-8080-0500-0575 DETOUR
NOT TO SCALE

TRAFFIC CONTROL PLAN



NOTE: CLOSE LEFT LAKE OF ENTRY APPROACHING S.R. 8080 UTILIZING PUB. 213 PATA 209-B

LEGEND
CONSTRUCTION AREA

